



***CERES***

Ceres Hellenic Shipping Enterprises Ltd.

Charis Nassis, ICT Manager  
Digital Ship Athens 2004

## Ceres Hellenic Shipping Enterprises

---

Ceres Hellenic Shipping Enterprises Ltd is one of the largest and oldest shipping companies worldwide, doing business in several sectors of the maritime industry, and is specialized in ship management.

Ceres currently manages 41 vessels (Chemical Tankers, Bulk Carriers, Oil Tankers, LNG Carriers, Coastal tankers), and is based in Piraeus Greece.

<http://www.ceres.gr/>

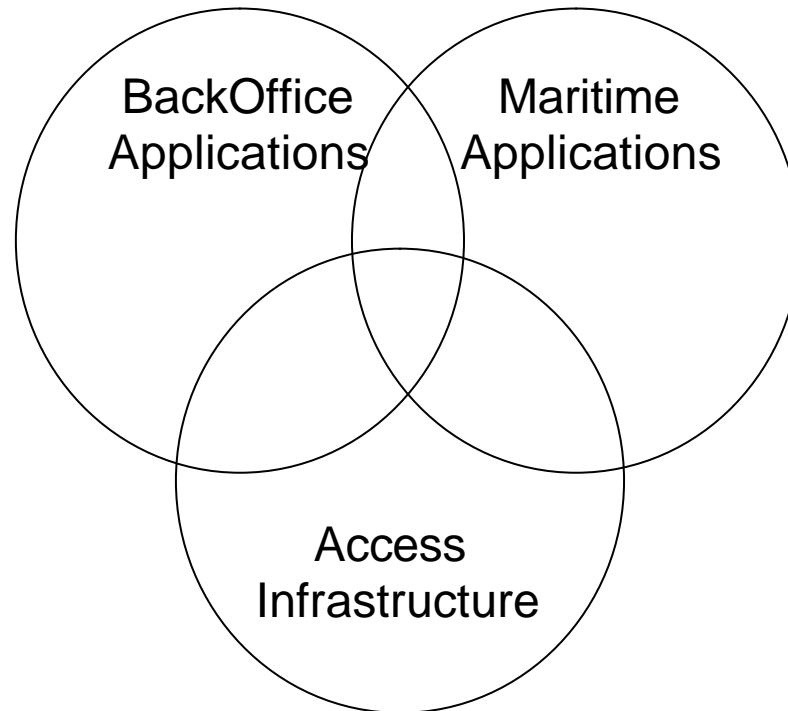


**CERES**

Safety means the World to Us

# Information and Communication Strategy

---



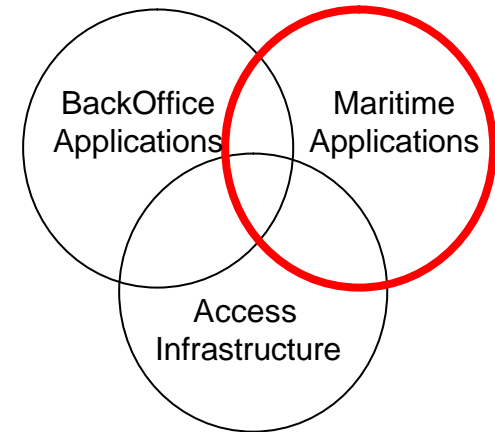
**CERES**

Safety means the World to Us

# Maritime Applications

---

- Planned Maintenance System
- Procurement
  - Spare Parts
  - Consumables
  - Services
- Crewing
- Vessel Reporting activities
- Performance/Operations/Voyage Estimation
- Qualification and Safety
  - ISM, ISO 9001:2000, ISO 14001, ...
- Ship to Shore Communication
- Ship design/construction



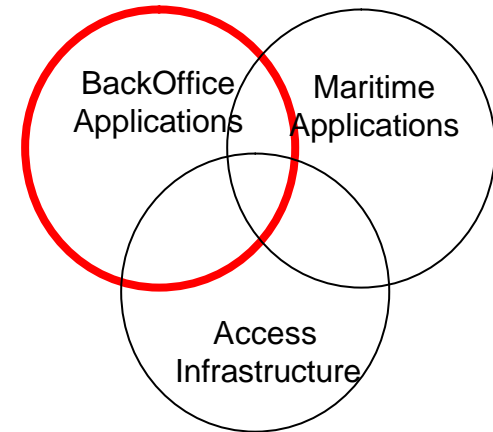
**CERES**

Safety means the World to Us

# Back Office Applications - ERP

---

- Financial
  - Accounting
  - Payable/Receivables
  - Budget/Cash flow
  - Costing
- Management Information System
- Service Providing
- Human Resources
- Corporate Travel
- Insurance/claims
- Procurement/ Supply Chain



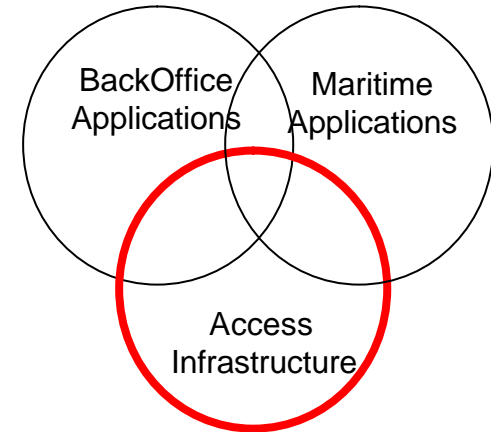
**CERES**

Safety means the World to Us

# Access Infrastructure

---

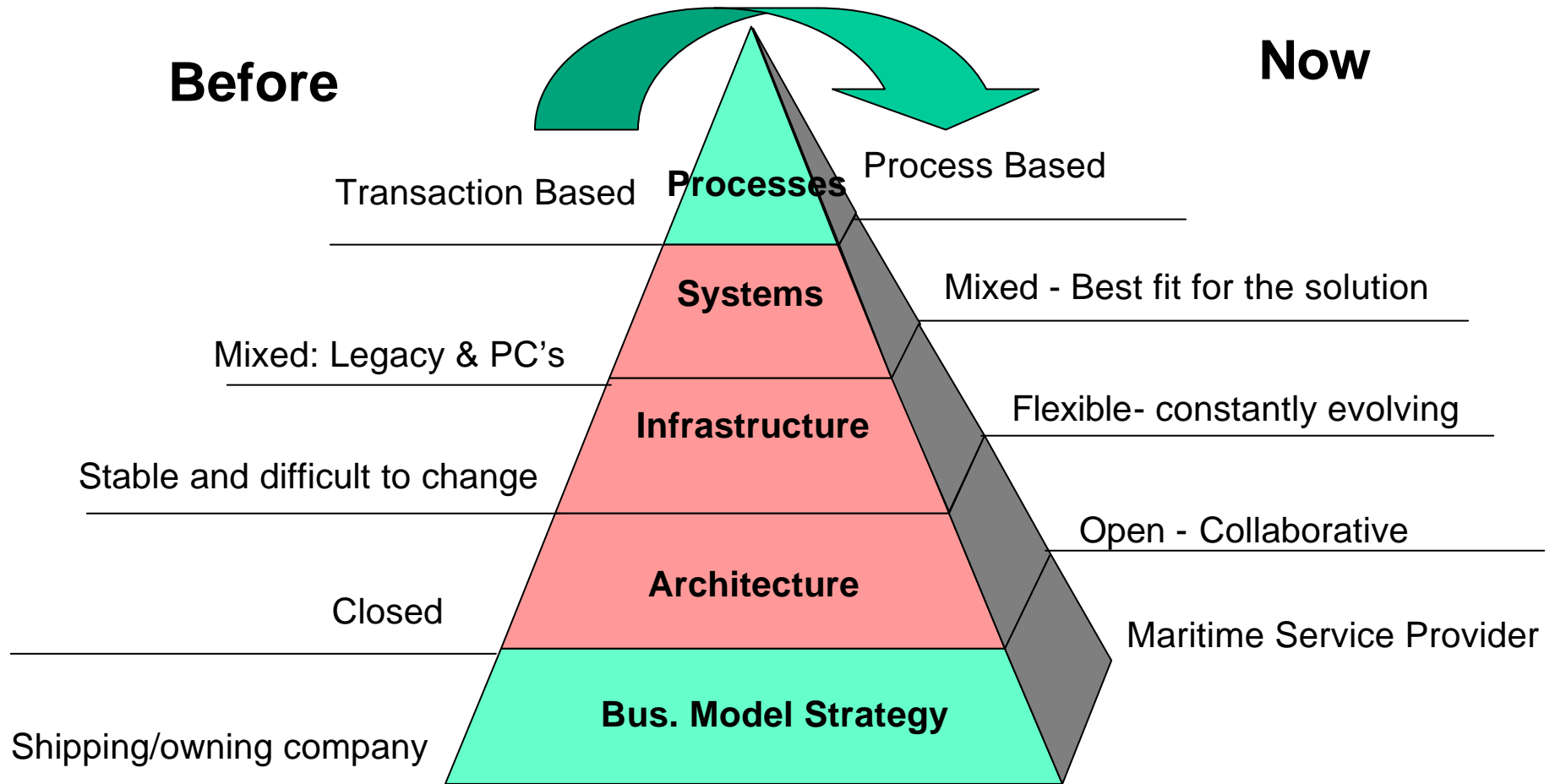
- End user access software  
(Lotus Notes, Browser, legacy interfaces)
- End user access devices  
(PC, PDA, cell phone, fax, telex, video conference, plain old telephony)
- Help Desk/Manuals
- Networking/ Internetworking
- Knowledge Management
- Security (physical, VPN, Policies)



**CERES**

Safety means the World to Us

# IT Strategy Evolution

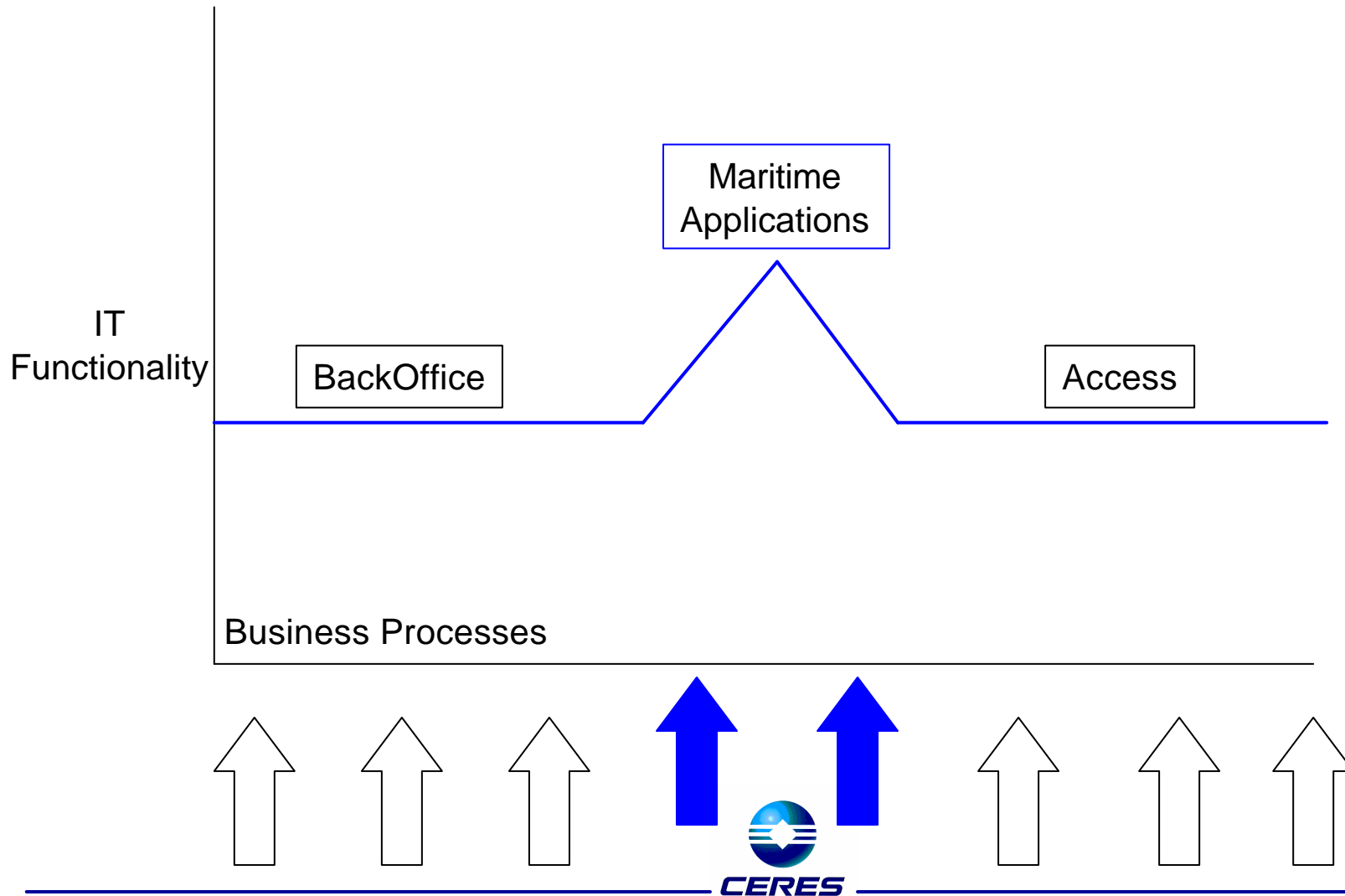


**CERES**

Safety means the World to Us

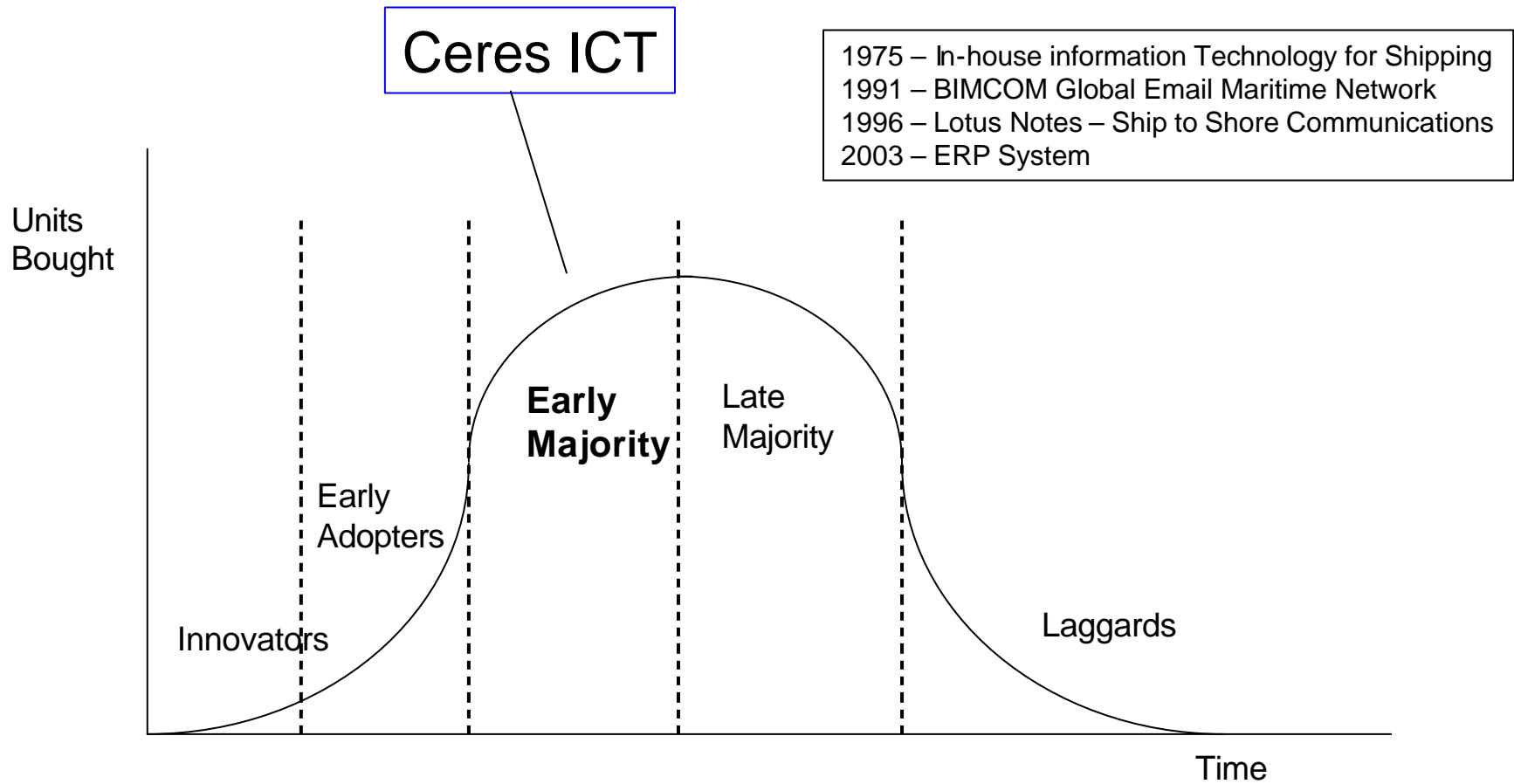
# Focus on Ceres competitive advantage

---





# Technology Adoption Curve



Source: Crossing the Chasm, G.Moore

# Latest Development

## The ERP Implementation

---

An 11 month effort, implemented in 2003 in return of:

- Best business practices
- Leading customer service
- Expandability, minimum development effort
- Standard platform
- Open & collaborative environment
- Lower Total Cost of Ownership

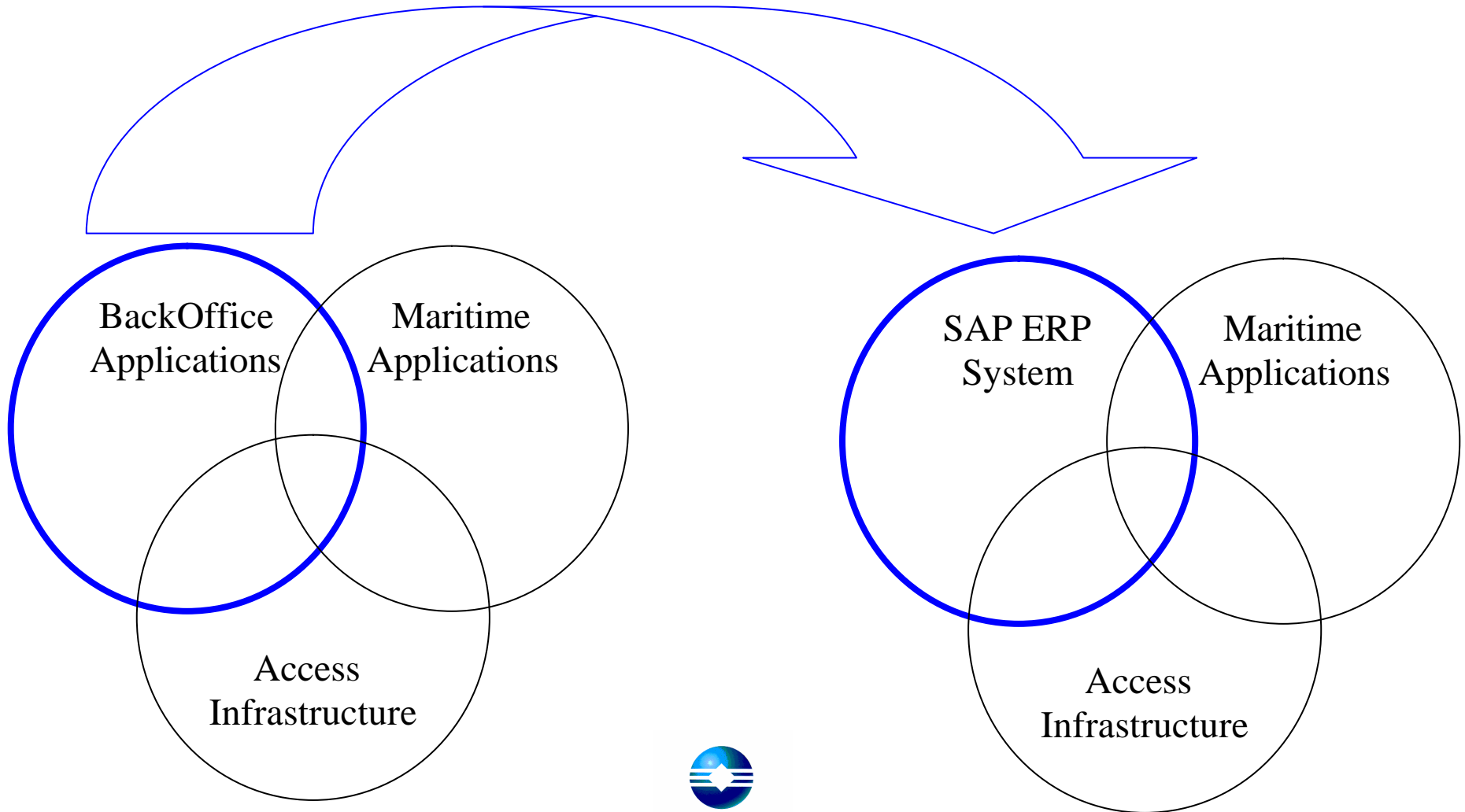


**CERES**

Safety means the World to Us

# Transition to SAP Enterprise Resource Planning System

---



# Areas Implemented

---

- Financials (Accounting, Payable/Receivables, Budget/Cash flow)
- Costing and Management Information System
- Corporate & Vessel Purchasing (Spare Parts, Consumables, Services)
- Human Resources ,Shore-Ship, Crew Payroll, MGA
- Customer Service
- Sales & Billing
- Insurance/Claims
- Integration with Vessel Software (Lotus Notes)



**CERES**

Safety means the World to Us

# Ceres ERP Project Milestones

---

- **Evaluation (Software, Consultants, Hardware)**  
Project led by ICT, end users involved, shared knowledge base, about 20 key user interviews, product presentations.
- **Company awareness on the new project**  
Top management commitment, key users participation, frequent updates, project news, change management.
- **Project Team**  
7 working groups. Participants for each group: Ceres ICT, key users, consultants.
- **Collaboration Tools**  
Collaboration team room, digital and physical work area, detailed project plan, 5k documents produced.  
Most important the “To Be” documents, the blueprint for the system functionality.
- **Prototype system**  
User familiarization, development and configuration changes, testing, data migration.
- **User Acceptance**  
130 user acceptance tests, about 200 business processes, ship to shore integrated tests



**CERES**

Safety means the World to Us

# ERP Training Program

---

- **Computer Based Training**  
Introduction to SAP for Ceres
- **Training Seminars**  
14 different topics, 130 corporate users, 330 training days, 75 seamen.
- **User Documentation – Ceres ERP Manuals**  
49 user manuals covering 200 business processes, 1.000 copies distributed.
- **Live support**  
Side by side with the users, assistance for the days following the “Go Live”.
- **Ceres ERP Intranet Site**  
Manuals, Quick reference guides, Help files, System news & updates
- **Ceres ICT Help Desk**  
700 user calls, orderly resolved, in time by Ceres ICT.



**CERES**

Safety means the World to Us

# Computer Based Training

**INTRODUCTION TO SAP R3/4.6** 9:60  
CERES ICT DEPARTMENT Safety Means the World to Us

<b>PRE-ASSESSMENT</b>	estim. duration.....25'
<b>COURSE INTRODUCTION</b>	estim. duration.....5'
<b>LESSON 1: GETTING STARTED</b>	estim. duration.....90'
<b>LESSON 2: WORKING WITH SAP</b>	estim. duration.....75'
<b>FINAL ASSESSMENT</b>	estim. duration.....50'

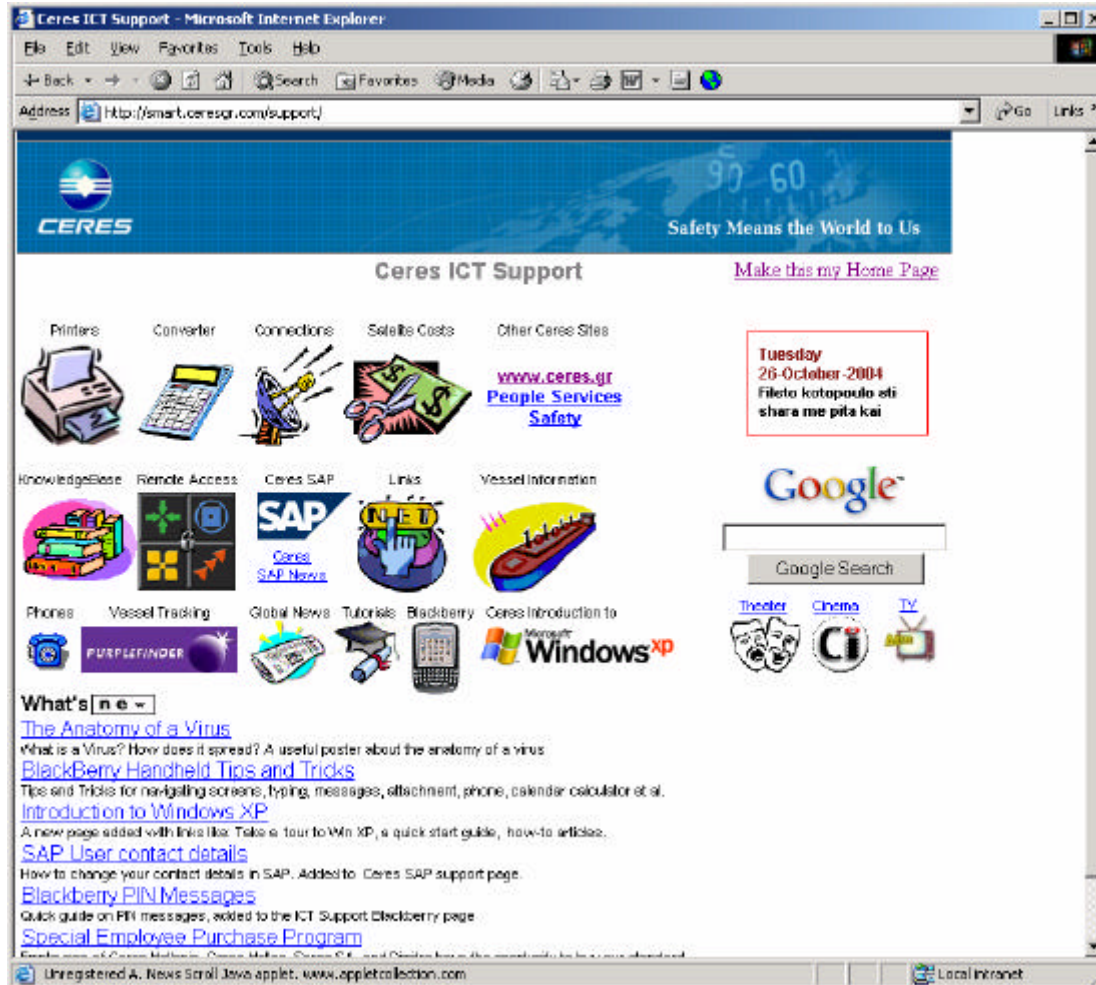
HELP EXIT IBM



**CERES**

Safety means the World to Us

# ICT Support - Intranet Site



**CERES**

Safety means the World to Us



# Ceres Manuals

Click on the 'Ceres Manning' button or 'Safe Manning' button to change the number of seamen per specialty

Seamen Nationality

Specialty code and Specialty description

Screen 24

Specialty	Paralel	Start date	Last name	First name	Specialty Description	Nat
CERES	5000003	01.01.2003	JH	JH		GR
AVTA	5000001	01.01.2003	SARIMETSAL	DMETRIS		GR
AVTA	5000002	01.01.2003	LIU	LIU		GR
AVTA	5000004	01.01.2003	DO			GR
AVTA	5000008	01.01.2003	PAVELOS			GR
AVTA	5000010	28.02.2003	SEKAMAT			GR
AVTA	5000012	01.01.2003	POLIZIS			GR
AVTA	5000015	08.01.2003	BAIDAR			GR
AVTA	5000018	01.01.2003	PAPAMETAS	DMETRIS		GR
AVTA	5000021	01.06.2003	SWOPELTY 2	TEBY		GR
AVTA	5000023	01.01.2003	VANDERBEEK	ANDRIS	AND	GR
AVTA	5000025	01.01.2000	HANSHO	HANSHO		GR
AVTA	5000028	01.01.2003	IANI	IANI		GR
AVTA	5000038	13.02.2003	PANTELOS	PANTELOS PA		GR
AVTA	5000040	12.02.2003	PANTELOS	PANTELOS PA		GR
AVTA	5000047	12.02.2003	PANTELOS	PANTELOS PA		GR
AVTA	5000048	13.02.2003	PANTELOS	PANTELOS PA		GR
AVTA	5000049	13.02.2003	PANTELOS	PANTELOS PA		GR
AVTA	5000050	12.02.2003	PANTELOS	PANTELOS PA		GR

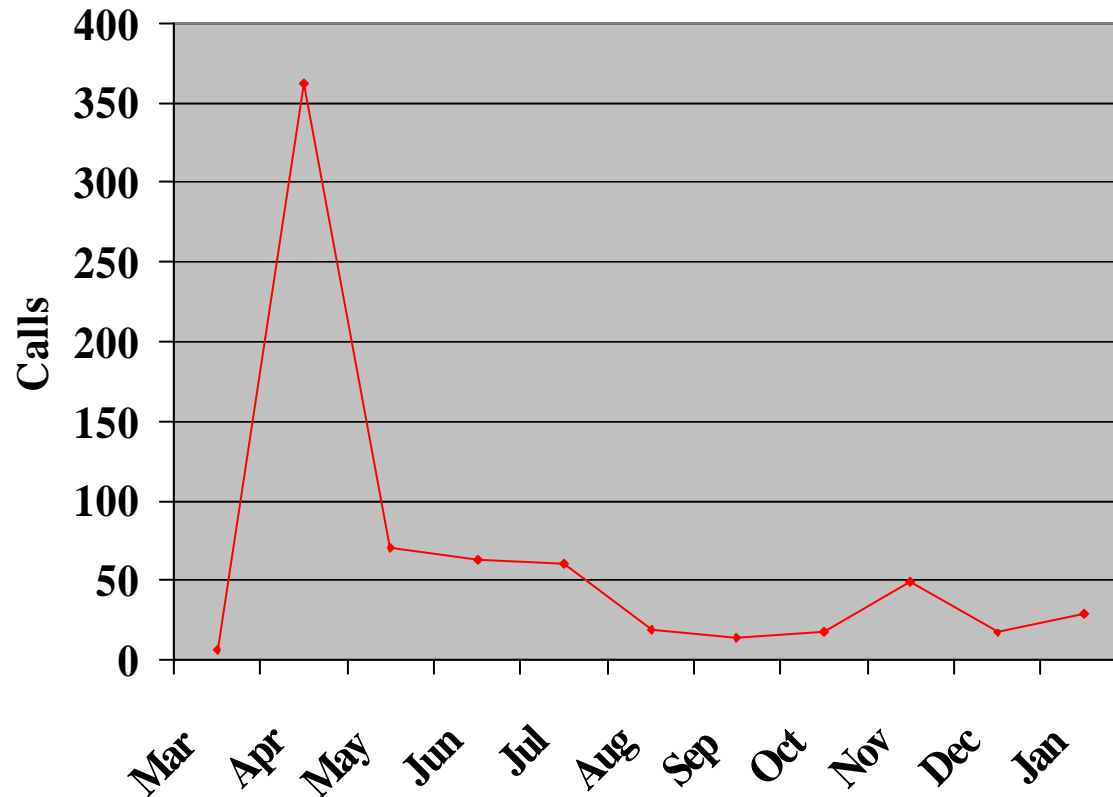


CERES

Safety means the World to Us

## Ceres ICT – ERP Help desk

---



**CERES**

Safety means the World to Us

# Systems Integration

---

## - Vessel - ERP

Purchasing transactions like requisitions and orders are initiated from the vessels, and handled by the Ceres shore office for purchase orders, request for quotes, logistics, invoice verification.

This automated and seamless integration drives important savings in time and increasing productivity, conclusively to a better ship management service.

Another ship to shore automated integration facility is, the ability of the vessel to notify the customer service of Ceres and order services online, a noteworthy upgrade of service quality.

## - ERP – Maritime System

Synchronization on master data like ports, agents, and transaction data related to disbursements and invoicing. (in progress)

## - Vessel – Maritime System

Vessel reporting system



**CERES**

Safety means the World to Us

# Questions

---



**CERES**

Safety means the World to Us